

# UPON REFLECTION



Interior designer Candice Woodward's inspired use of mirrors has made her compact Jo'burg townhouse feel double the size



TEXT TONI JAYE SINGER PHOTOGRAPHS CHRISTOPH HOFFMANN



Anyone who's ever renovated their home will know how stressful it can be; now imagine having a camera crew film every moment of the experience. Last year interior designer Candice Woodward did exactly that when she signed up to have the revamp of her new Jo'burg townhouse documented for DStv's *Sheer Design* – and she breezed through her TV debut with a smile on her face.

Candice and her husband, Matthew, bought their home based on its central location and because it had an easy flowing layout which meant they could avoid costly structural alterations. "The changes were mostly cosmetic," she says.

Most of the furniture came from the couple's previous home; some pieces were reupholstered or slip-covered to suit the new space. To keep the budget in check, Candice also used her designer touch to update many of the existing finishes. She painted the yellowy screed floors in the guest bathroom and powder room a cool grey and picked up a hue from the multicoloured mosaics for the walls, which are now a deep, rich brown. The rest of the interiors are painted in Plascon's Ivory Parchment. "It's the perfect mix of grey and beige and it works so well with other neutrals," she says. ▷



OPPOSITE PAGE: Candice is glimpsed through an opening in the mirrored wall between the kitchen and dining area. The existing kitchen doors were clad or replaced with back-painted Advanced Armour Glass from Glass South Africa (GSA). Three different shades of the same colour paint were used to add interest; these are graded from the lightest on the wall-mounted cabinets to darkest on the cabinets under the ProQuartz countertops from Stoneline. The kitchen was installed by Sembel-It. THIS PAGE, FROM TOP TO BOTTOM: ● Candice's love of nature is reflected in her repeated use of fabrics with botanical motifs as well as in this playful Robin design, which was printed onto some of the glass panels. ● The wall between the dining area and kitchen is clad with mirror, which bounces light back into the room and visually doubles the space. Candice updated her existing dining chairs with slip covers in Lounge from Home Fabrics; the 'caps' of printed material, Grand Paisley from Wolfe Street Fabrics, are a pretty, yet practical touch as they help to keep the off-white fabric free of dirty fingerprints. The carvers are from Peter J A Stuart.

Candice used a bold striped Romo wallpaper, from Intertex, to make a feature of the walls which partially divide the dining area from the living room. "I chose this design to help camouflage the flat screen TV which hangs on the other side of the wall opposite the sofa," she says.



The most dramatic changes were made to the galley kitchen. The once-dented stainless steel counters have been replaced with snowy ProQuartz, the black slate floor tiles with a non-slip grey tile and the faux wooden cabinet doors were either clad or replaced with back-painted Advanced Armour Glass for a sleek, contemporary look.

Although it's spread over two floors, Candice's townhouse has compact

dimensions, so one of her priorities was to enhance the sense of light and space, which she did by creatively using mirrors. To update each of the old-fashioned passage doors, she stuck a mirror inside the outline created by the beading on the back. She's also hung them up as an alternative to art, used them to clad some of the furniture and curtain pelmets as well as to create an optical illusion by making the wall between the kitchen and the

LEFT: A low bookcase informally divides the living room from the study. "I decided to keep these areas open plan as it allows Matthew and I to spend time together, even if one of us is working and the other is watching TV," Candice explains. The scatters are in Henna from Mavromac. On the sofa is Candice's one Yorkie, Tommy. BELOW: The old-fashioned glass doors dividing the covered patio from the living room were replaced with modern aluminium-framed ones. When these are folded back the two spaces become one large seating area. "This is great when we're entertaining a crowd in summer," says Candice. The garden was landscaped by Red Daffodil. On the couch is Candice's other Yorkie, Kai.



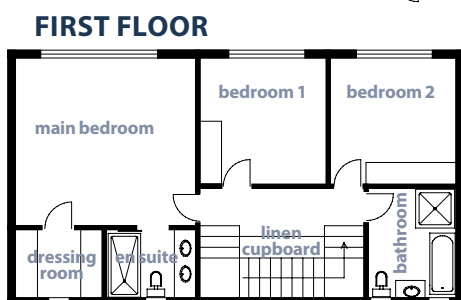
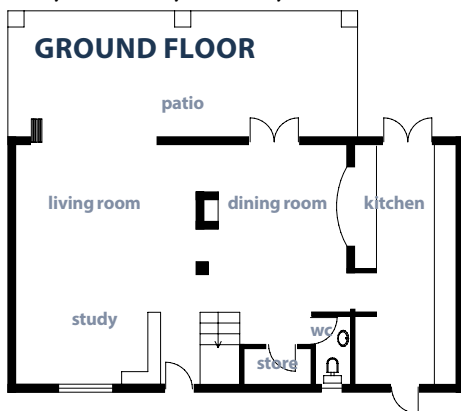
To get this look, see page 52.



dining area seem to disappear.

“All the mirrors made filming quite difficult as the camera crew had to try and avoid catching themselves in the reflections,” she says. “Although recording the renovation had its challenges and took months of planning, it was a wonderful opportunity and I love the end results – my home is my sanctuary.” **GEH**

CLOCKWISE FROM TOP LEFT: ● The serenely stylish master bedroom is Candice’s favourite space; she clad her existing bedside tables with mirror to give them a glam new look. The wallpaper is from Design Syndicate and the plush wingback headboard is from Candice Woodward Interiors. ● “If you can’t find the right piece of art, mirrors make a great alternative,” says Candice. The striped feature wall in the guest bedroom was painted using Plascon’s Ivory Snow and Bauhaus. The scatters are made up in Fiorette from Mavromac and Wrinkle from St Leger & Viney. The lamp is from Purple Dot Lighting and the bedside table is from New to You. ● To better complement the existing glass mosaics, Candice repainted the creamy yellow walls in the upstairs guest bathroom in Mandarin Brown from Panache.



**SOURCES**

- Candice Woodward Interiors** 086 183 3267 or [candice@cwinteriors.co.za](mailto:candice@cwinteriors.co.za)
- Design Syndicate** [www.designsyndicate.co.za](http://www.designsyndicate.co.za) **Glass South Africa (GSA)** 011 971 1319 **Home Fabrics** 011 266 3700 or [www.homefabrics.co.za](http://www.homefabrics.co.za)
- Intertex** 012 362 2616 **Mavromac** 011 444 1584 **New to You** 082 602 3284 or [www.newtoyou.co.za](http://www.newtoyou.co.za) **Panache** [www.panache.co.za](http://www.panache.co.za) **Peter J A Stuart** 011 786 2323 or [www.peterjastuart.com](http://www.peterjastuart.com) **Plascon** 0860 204 060 or [www.plascon.co.za](http://www.plascon.co.za)
- Purple Dot Lighting** 011 440 3598 or [www.purpledotlighting.com](http://www.purpledotlighting.com)
- Red Daffodil** [www.reddaffodil.co.za](http://www.reddaffodil.co.za) **Sembel-It** 0861 542 436 or [www.sembel-it.co.za](http://www.sembel-it.co.za)
- St Leger & Viney** 011 444 6722 or [www.stleger.co.za](http://www.stleger.co.za) **Stoneline** 011 786 9012
- Wolfe Street Fabrics** 021 701 3888 or [www.wolfestreet.co.za](http://www.wolfestreet.co.za)